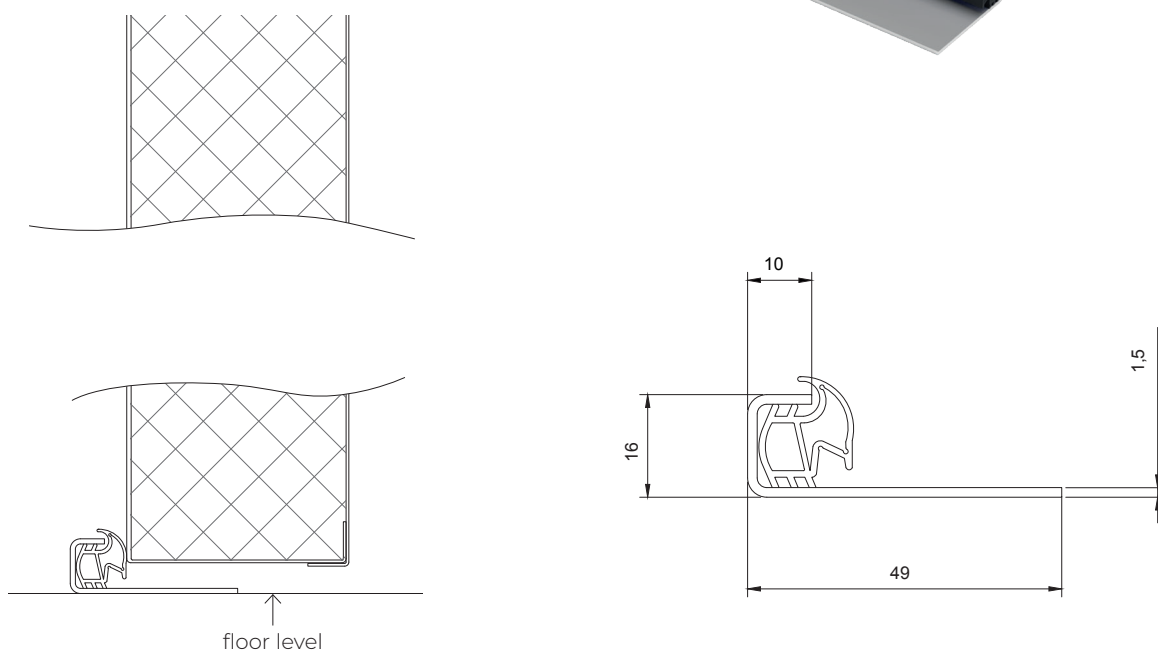
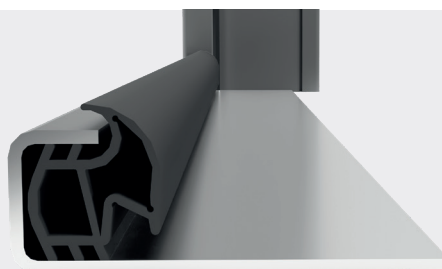
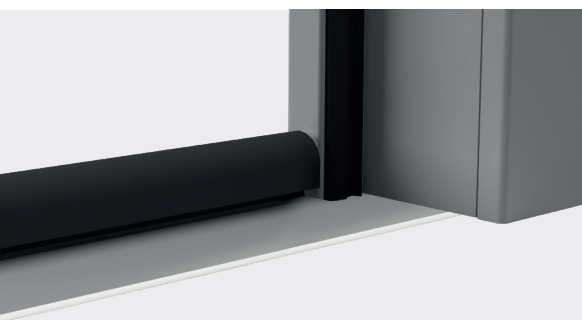




- the standard threshold is made of stainless steel 1.5 mm bent to hold an EPDM gasket
- the threshold is floor-mounted on site between legs of door frame
- MIND!- there are no factory-drilled holes for screws in this threshold
- optional finish – made of zinc steel, powder coated



→ cross sections and sizes

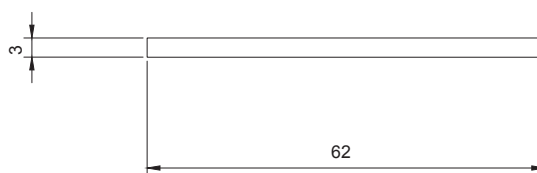
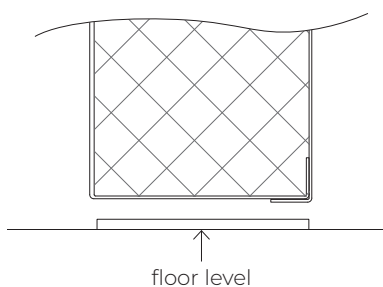
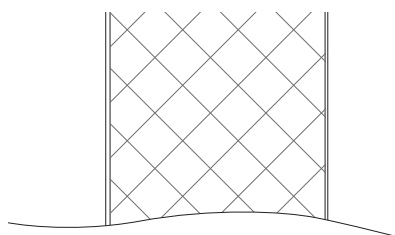


optional finish  
– made of zinc steel

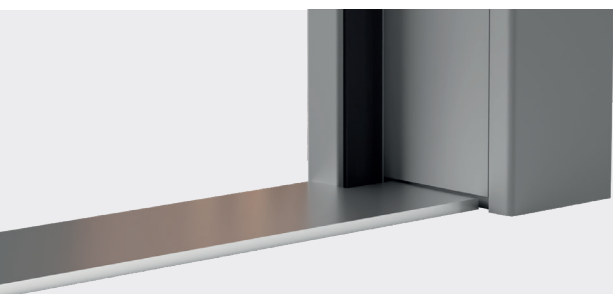
FLAT THRESHOLD



- flat threshold is made of stainless steel 3.0 mm
- Ø 10 mm sunk holes are drilled for installation on site, threshold is affixed between legs of door frame
- optional finish – made of zinced steel, powder coated



→ cross sections and sizes

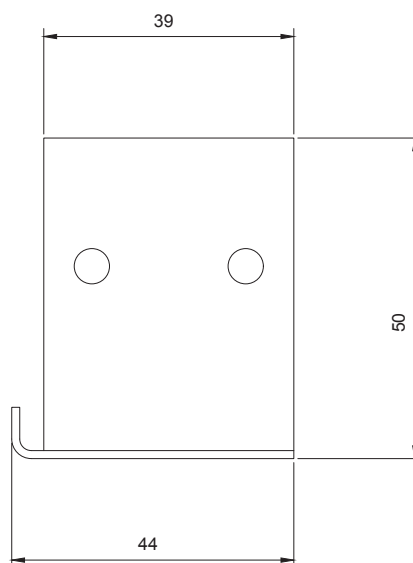
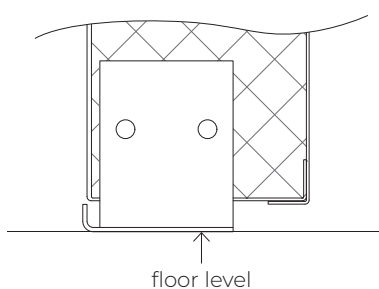
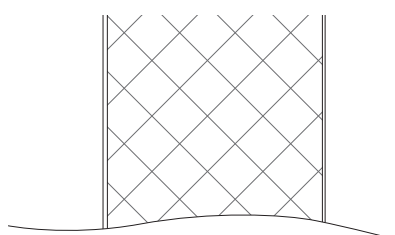


optional finish  
– made of zinced  
steel

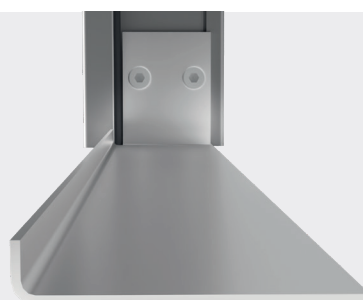
## CONNECTING TEMPORARY THRESHOLD ( for site transportation )



- ancillary threshold made of zinc coated steel of thickness 0.8 mm, not painted
- temporarily fixed between legs of the door frame, to be disassembled after installation of the door in wall opening.



→ cross sections and sizes



**disassembled**  
after installation  
of the door