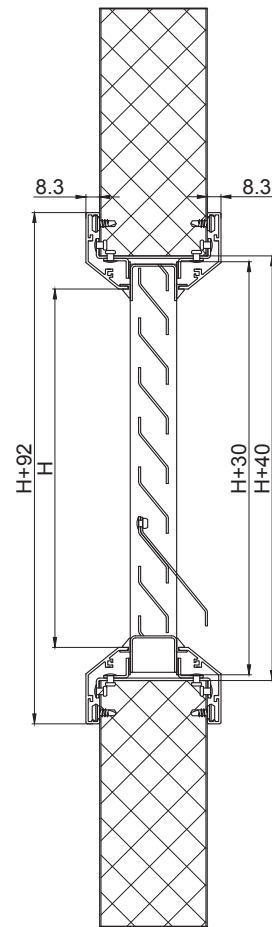
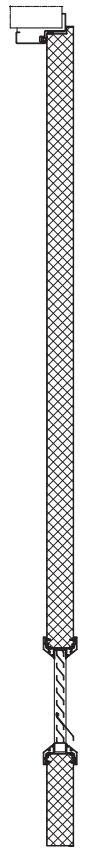
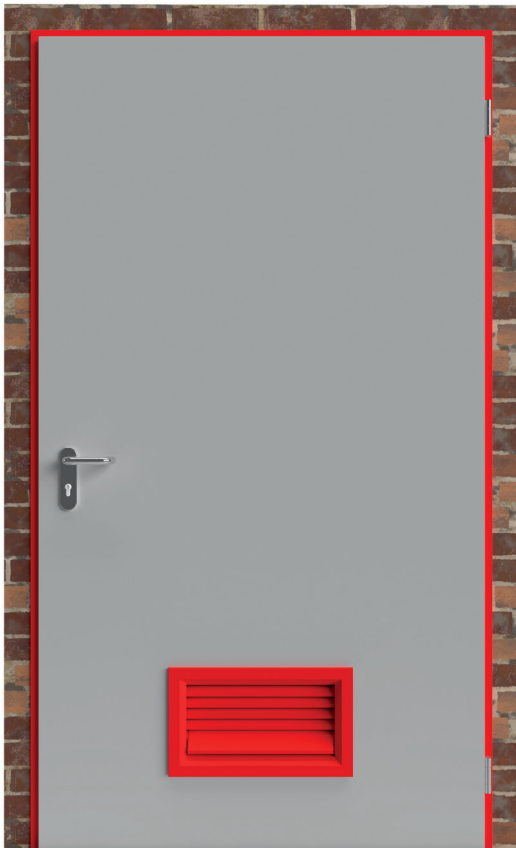
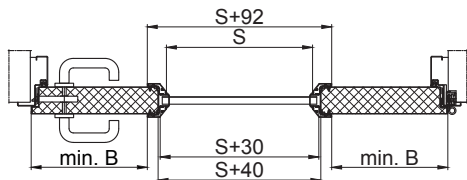


VENTILATION GRILL TYPE Z

- ventilation grills for internal/ external non fire resistant doors type DFM DS 00, DFM OS 00
- maximum size of the grill: 800x800 mm
- minimum distance of vertical edges of door leaf: 200 mm
- minimum distance (B) of bottom edge of door leaf: 150 mm
- jalousie insert of zinc-coated steel; fitted in door leaf with clamp-on framing (DFM DS 00) or screwed-in steel frames (DFM OS 00)
- powder coated in any RAL colour
- active area of ventilation: 0,6
- rain drip cap included
- available with anti-insect mesh



→ Detail



→ Cross section

hinges side view



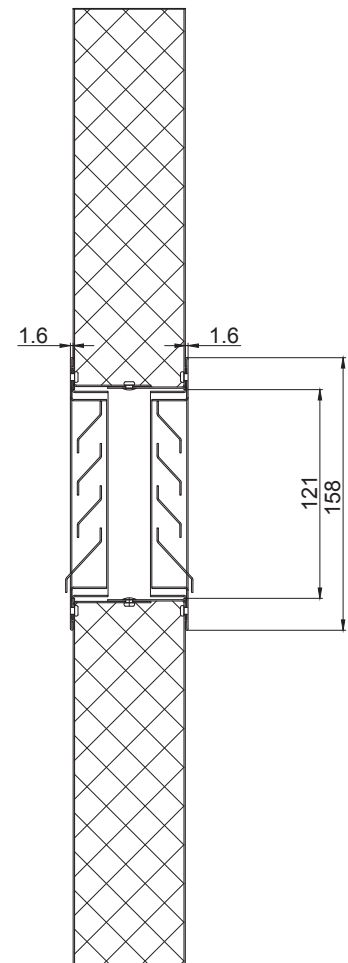
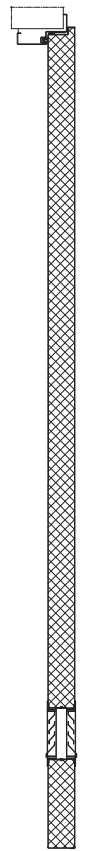
non-hinges side view



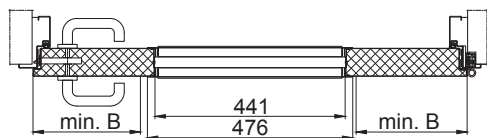
ventilation grill
for internal / external
non fire resistant
doors

VENTILATION GRILL type KWZ

- ventilation grill for internal non fire resistant door type DFM DS 00
- size of the grill: 440x120 mm
- minimum distance of vertical edges of door leaf: 200 mm
- minimum distance (B) of bottom edge of door leaf: 150 mm
- standard manufacture: zinc-coated steel powder coated in any RAL colour
- available in brushed stainless steel finish
- active area of ventilation: 0,022m²
- rain drip cap and anti-insect mesh included

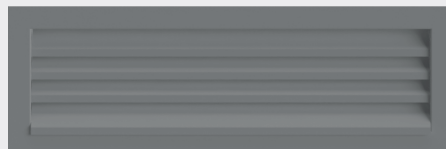


→ Detail



→ Cross section

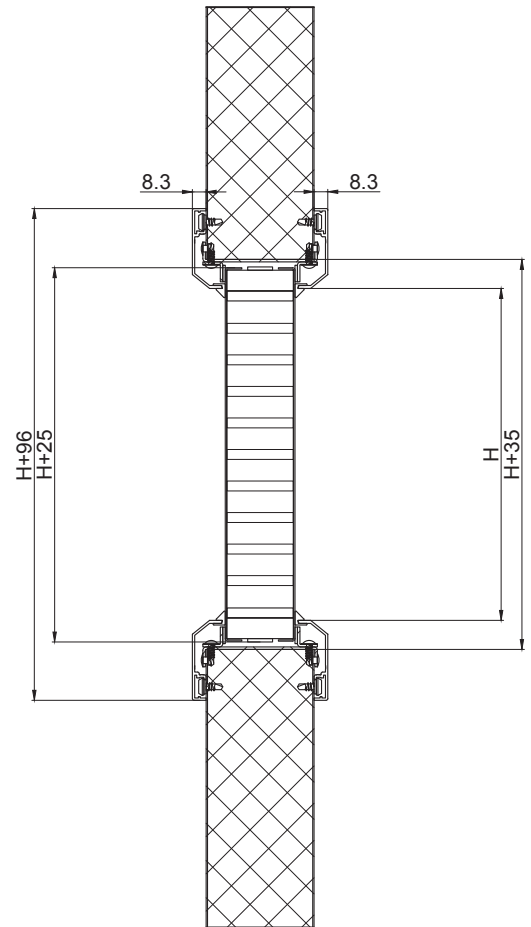
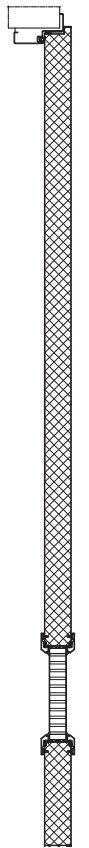
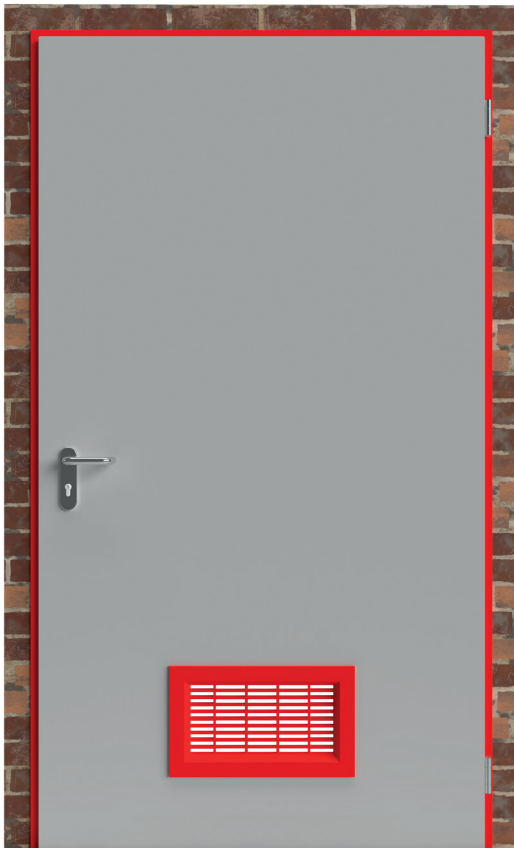
the same view on both sides



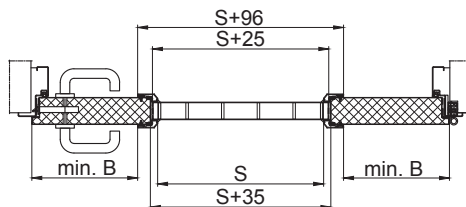
ventilation grill
for internal
non fire
resistant doors

VENTILATION GRILL type ZEFIR in aluminium framing

- ventilation grill for internal fire resistant doors type DFM DS 30, DFM DS 60
- maximum size of grill: 800x600 mm
- available sizes (series): 400x200 mm, 400x400 mm, 400x600 mm, 800x400 mm, 800x600 mm
- minimum distance of vertical edges of door leaf: 200 mm
- minimum distance (B) of bottom edge of door leaf: 150 mm
- intumescent insert; fitted in door leaf with clamp-on aluminium-steel framing
- powder coated in any RAL colour
- active area of ventilation: 0,6
- available with anti-insect mesh

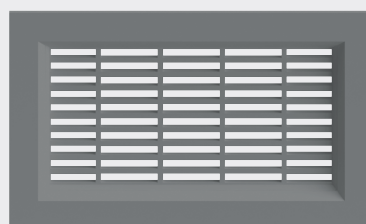


→ Detail



→ Cross section

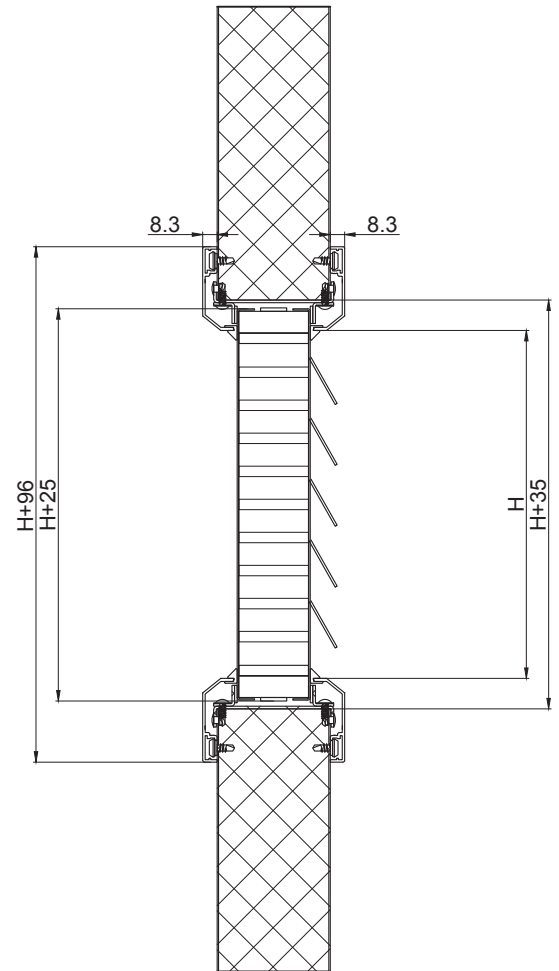
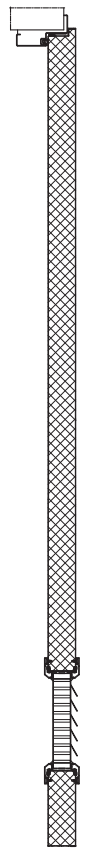
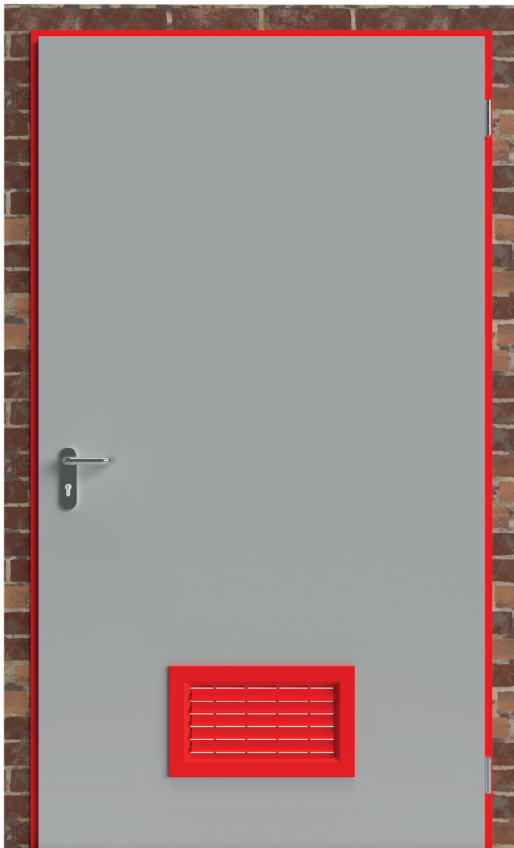
the same view on both sides



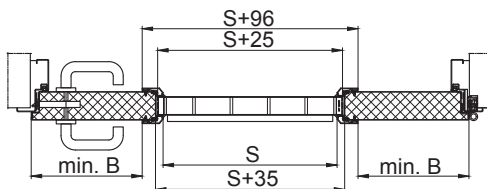
ventilation grill
for internal
fire resistant doors
type DFM DS 30 /
DFM DS 60

VENTILATION GRILL type ZEFIR in aluminium framing

- ventilation grill for external fire resistant doors type DFM DS 30, DFM DS 60
- maximum size of grill: 800x600 mm
- available sizes (series): 400x200 mm, 400x400 mm, 400x600 mm, 800x400 mm, 800x600 mm
- minimum distance of vertical edges of door leaf: 200 mm
- minimum distance (B) of bottom edge of door leaf: 150 mm
- intumescent insert; fitted in door leaf with clamp-on aluminium-steel framing
- powder coated in any RAL colour
- active area of ventilation: 0,6
- rain drip cap included
- available with anti-insect mesh

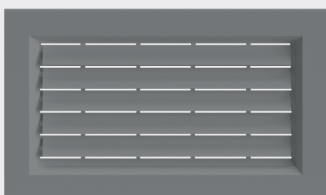


→ Detail

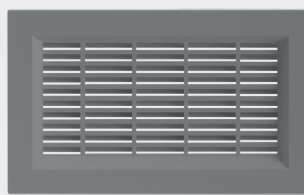


→ Cross section

hinges side view



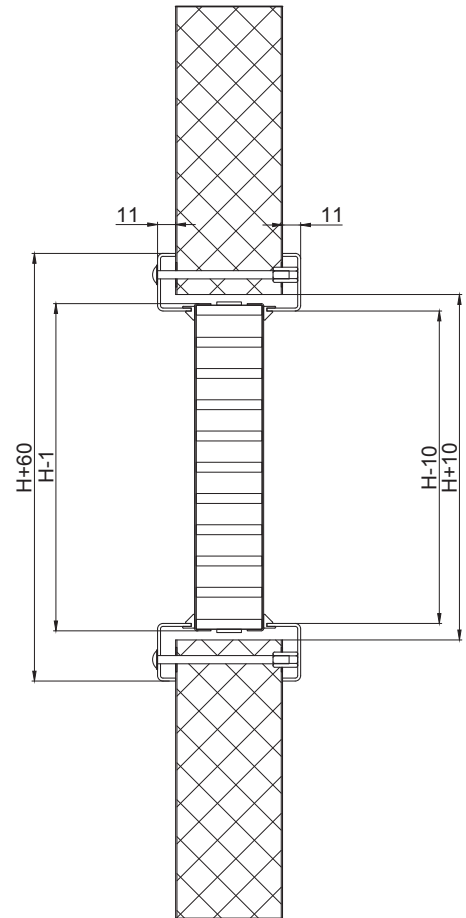
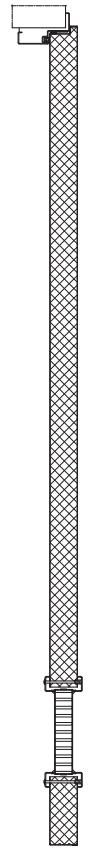
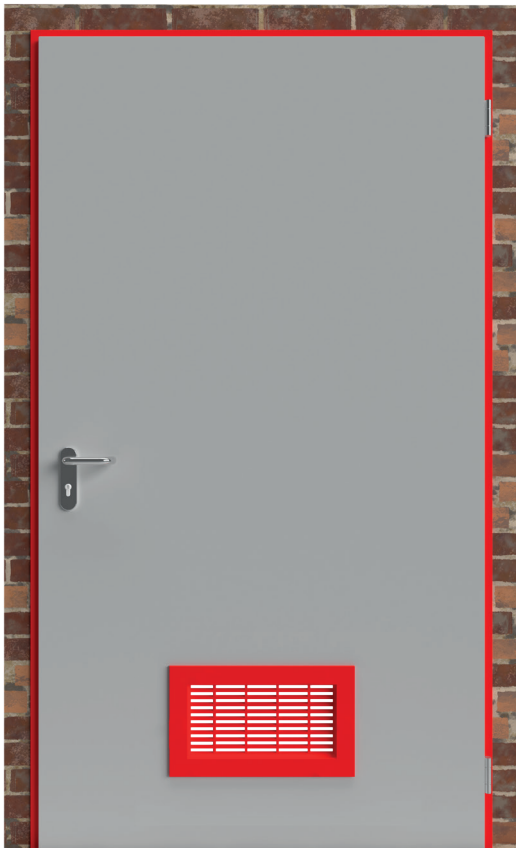
non-hinges side view



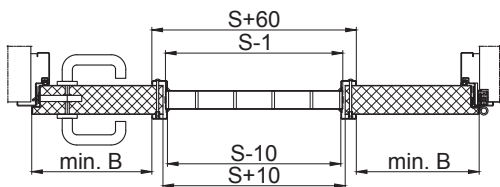
ventilation grill
for external
fire resistant doors
type DFM DS 30 /
DFM DS 60

VENTILATION GRILL type ZEFIR in steel framing

- ventilation grill for internal fire resistant doors type DFM OS 60
- maximum size of grill: 800x600 mm
- available sizes (series): 400x200 mm, 400x400 mm, 400x600 mm, 800x400 mm, 800x600 mm
- minimum distance of vertical edges of door leaf: 200 mm
- minimum distance (B) of bottom edge of door leaf: 150 mm
- intumescent insert; fitted in door leaf with screwed-in steel framing
- front and back parts of steel frame are screwed together, as standard the screws are visible on non-hinges side and on hinges side the frame is plain; at request it is possible to reverse sides
- powder coated into any RAL colour
- active area of ventilation: 0,6
- available with anti-insect mesh

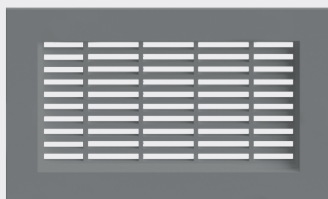


→ Detail



→ Cross section

hinges side view



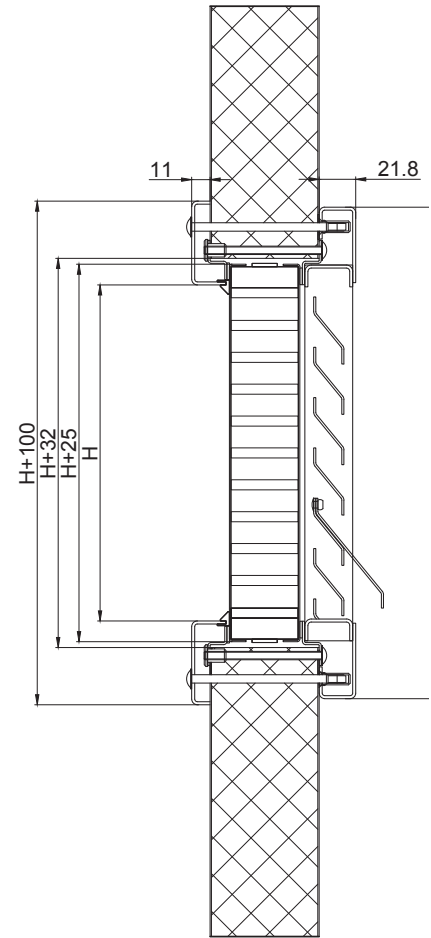
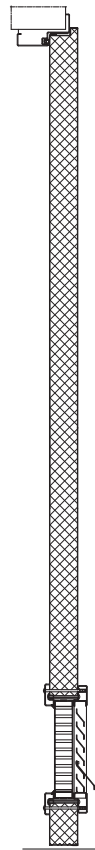
non-hinges side view



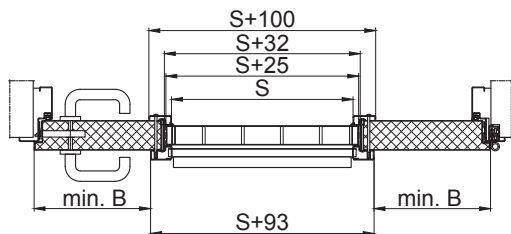
ventilation grill
for internal
fire resistant doors
type DFM OS 60

VENTILATION GRILL type ZEFIR in steel framing

- ventilation grill for external fire resistant doors type DFM OS 60
- maximum size of grill: 800x600 mm
- available sizes (series): 400x200 mm, 400x400 mm, 400x600 mm, 800x400 mm, 800x600 mm
- minimum distance of vertical edges of door leaf: 200 mm
- minimum distance (B) of bottom edge of door leaf: 150 mm
- intumescent insert; fitted in door leaf with screwed-in steel framing
- front and back parts of steel frame are screwed together, as standard the screws are visible on non-hinges side and on hinges side the frame is plain; at request it is possible to reverse sides
- powder coated into any RAL colour
- active area of ventilation: 0,6
- rain drip cap included
- available with anti-insect mesh



→ Detail

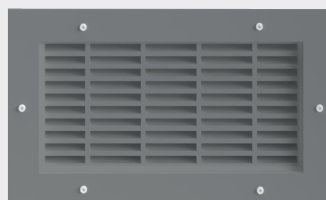


→ Cross section

hinges side view



non-hinges side view



ventilation grill
for external
fire resistant doors
type DFM OS 60